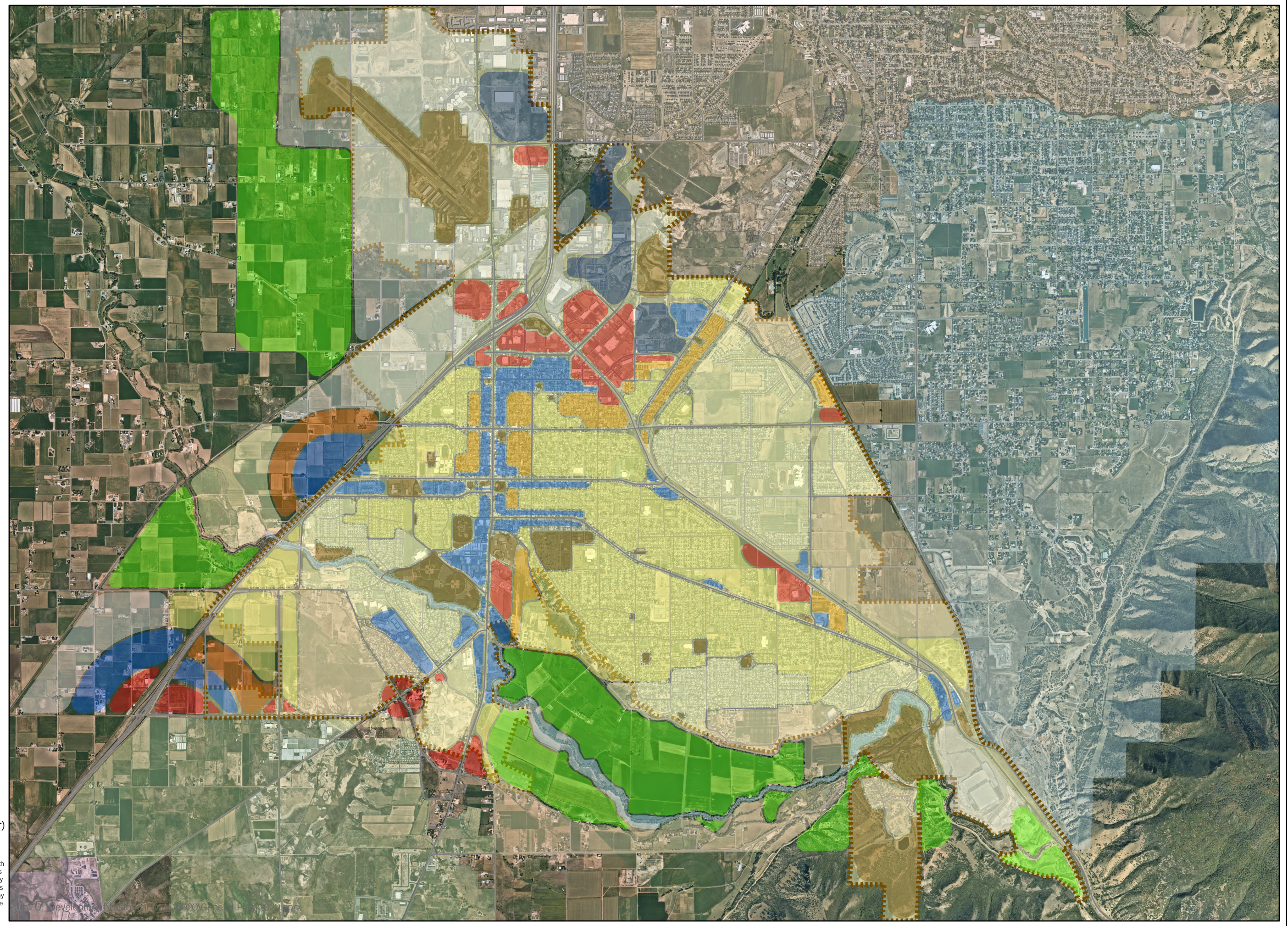


General Plan 2020

1" = 3,315 Ft

Legend

- Agricultural
- Business Park
- Commercial
- Floodplain (FLOODWAY)
- Industrial
- Estate Density Residential
- Low Density Residential



Print Date: 11/9/2021

Spanish Fork City GIS
40 South Main St
Spanish Fork, UT 84660
GIS Phone Numbers:
(801) 804-4571 (Administrator)
(801) 804-4570 (Intern)
(801) 804-4572 (Intern)

Disclaimer: Spanish Fork City makes no warranty with respect to the accuracy, completeness, or usefulness of these maps. Spanish Fork City assumes no liability for direct, indirect, special, or consequential damages resulting from the use or misuse of these maps or any of the information contained herein. Portions may be copied for incidental uses, but may not be resold.